

How behavior analysis contributes to a better life for non-human individuals

Eva Bertilsson
Carpe Momentum
 eva@carpemomentum.nu



Behavior Analysis - where are the animals?

Experimental analysis of behavior

- animals as research subjects for basic principles of behavior

Applied behavior analysis

- animals as subjects in applied research and service delivery...

... for the benefit of human society

... for the benefit of the individual animal



For the benefit of the individual animal

Social validity

- Behavioral goals
- Choice of procedure
- Effects

From the BACB guidelines:

- 4.05 Using reinforcement rather than punishment.
- 4.06 Avoiding harmful reinforcers and undesirably marked deprivation procedures
- 4.10 Choosing least restrictive procedures.



An animal welfare perspective

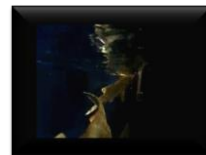
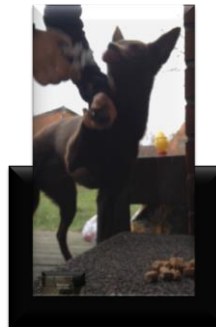
Baer, Wolf & Risley, (1968) Some current dimensions of applied behavior analysis.

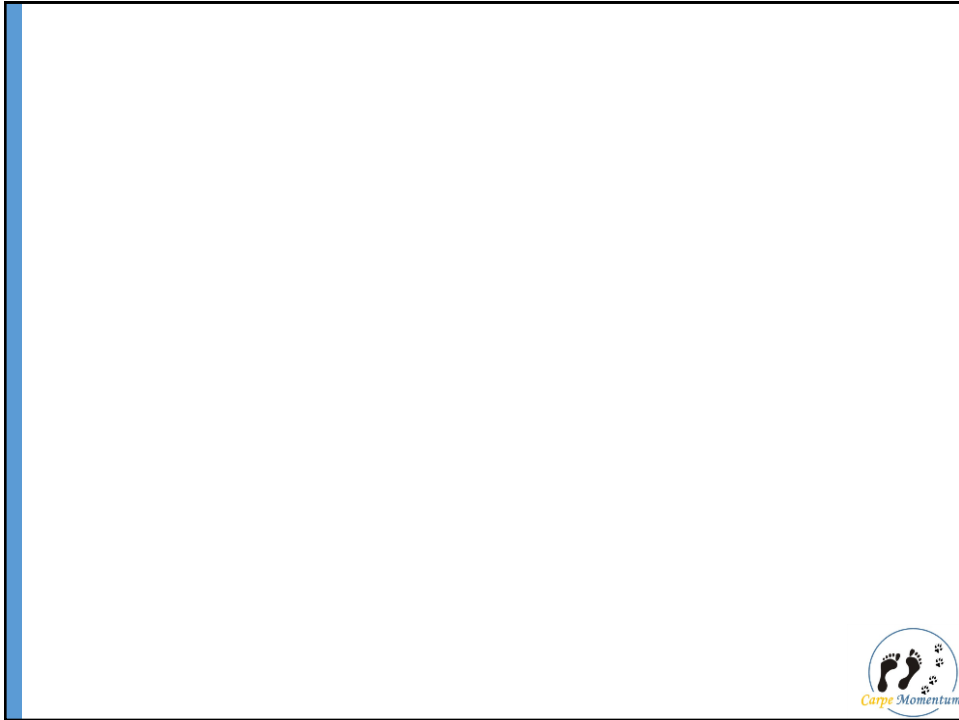
Wolf, M. M. (1978) Social validity: The case for subjective measurement or how applied behavior analysis is finding its heart



Participate in their own care

- Minimize force and coercion
- Safer for all!
- Necessary husbandry procedures can be transformed into enriching activities





Behaviors promoting physical fitness and health

- General
- Species-specific



Reduce anxious, fearful or aggressive behavior

- ❑ Giving a wider behavioral repertoire, and access to new reinforcers in life.
- ❑ Reduce the emotional response
- ❑ Teach alternative behaviors that more effectively render reinforcement



Pudu – work in progress

Goal:

R+ training sessions

First partial goal:

Come eat when food is served!



Typical Pudu morning. No rush to breakfast...



Valuable life skills

- ☐ Behaviors that effectively achieve reinforcers and avoid aversives

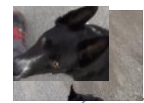
Examples:

- ☐ Safety behaviors
- ☐ "Socially appropriate behaviors"
- ☐ Effective communication with humans and other animals



How to set up a complex and reinforcing living environment where behavior matters

- ☐ EO & Reinforcer assessment ("wants and needs")
- ☐ Reinforcers contingent on behavior
- ☐ Stimulus control
- ☐ Reinforcement schedules
- ☐ "Choice and control"!



Markowitz, H. (1981) Behavioral enrichment in the Zoo.

Skinner, B. F. (1975) The ethics of helping people. Criminal Law Bulletin, 1975, 11, 623-36





Thank You!

Eva Bertilsson
eva@carpemomentum.nu
+46 706 58 23 20

www.carpemomentum.nu

